

SITA FOR AIRCRAFT

Efficient & Sustainable aircraft operations

#TS310523



Kemal Ahmed

SITA
FOR AIRCRAFT

SITA



Born to **foster collaboration** across the air transport industry by **sharing and bridging data**.



100% owned by the **industry** and dedicated to its needs.



Steered by the expertise and experience of the SITA Board and SITA council, comprising over **45 air transport industry CIOs** and other IT professionals

SERVING
2,500+
airlines, airports, ground
handlers and governments

95%
of international destinations
are served by SITA

AT OVER
390
locations

1,700+
Strong global team of service
professionals and field
engineers "on the ground"
24/7/365

WITH OVER
4,600
employees

BUSINESS UNITS

SITA

COMMUNICATION
AND DATA EXCHANGE

SITA

AT BORDERS

SITA

AT AIRPORTS

SITA

FOR AIRCRAFT

SITA FOR AIRCRAFT

360+

EMPLOYEES

EURO
204

AMER
111

APAC
40

MEA
9

Key locations:

Geneva (HQ)
Switzerland

Montreal
Canada

Dubai
UAE

Singapore
Singapore

Atlanta
USA

Paris
France

Barcelona
Spain

Prague
Czech Republic

طرابلس ليبيا



Industry experts

Over seven decades of air transport industry expertise



Global exchange of flight data

At the heart of nearly all aircraft data exchanges in the industry

Our priorities

The industry's most **pressing challenges** are our **top priorities**



**Making better
and timely
decisions**



**Improving
operations**



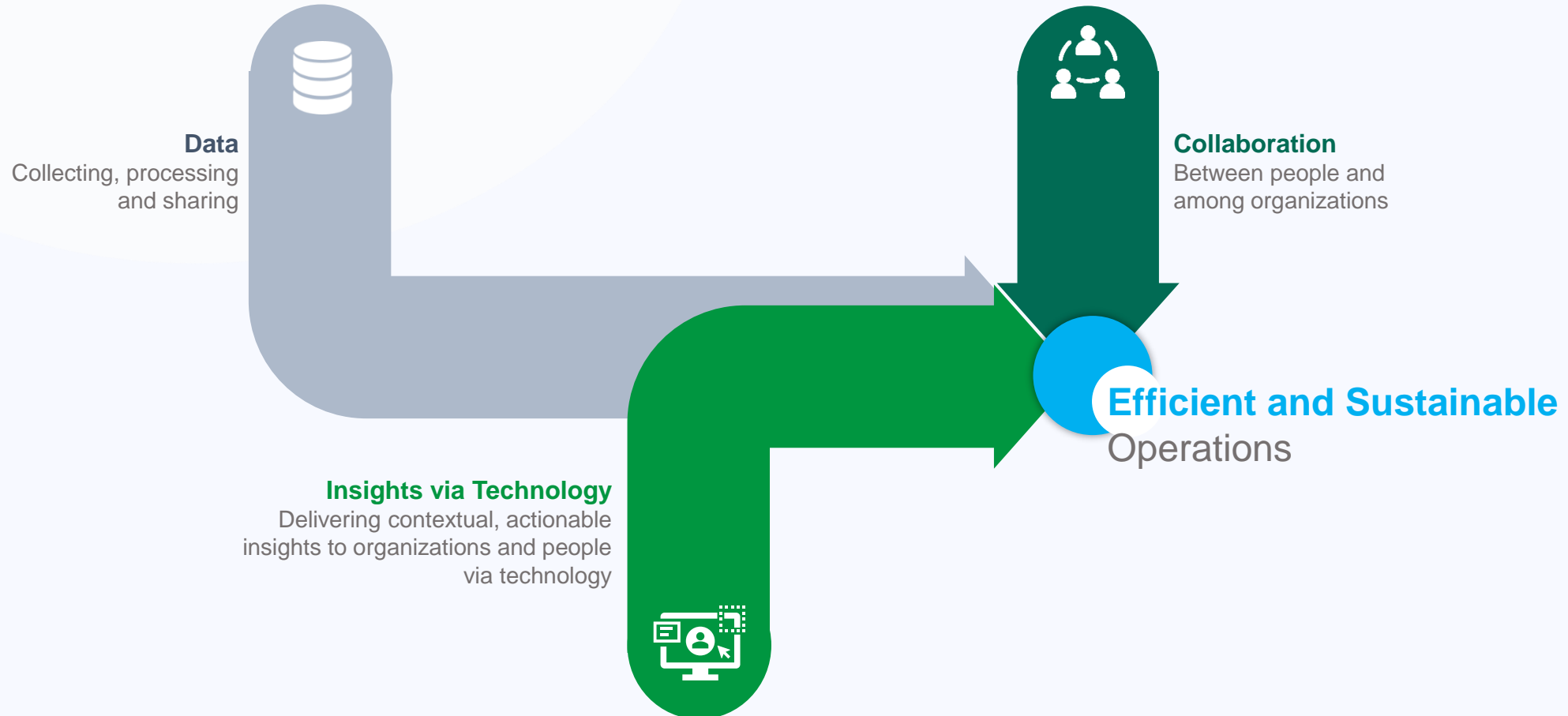
**Reducing
operational costs**



**Reducing
environmental
footprint**

A collaborative, data-driven approach to improve operations

We **address** the industry's most pressing challenges by **combining collaboration** with **data** and **technology**



Collaboration and data in action to drive more efficient and sustainable flights

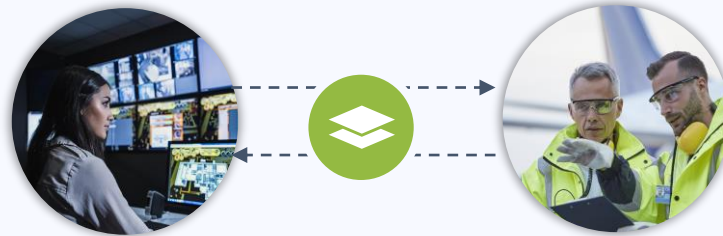
CHALLENGE

Real-time communication in every corner of the globe

Anticipate, adapt and **optimize each flight**

Access aircraft data to improve operations

COLLABORATION AND DATA IN ACTION



BENEFITS

Smoother, more efficient operations for **safer airspace**

Duty personnel empowered to operate each flight in a more **efficient and sustainable** way

Custom, predictive maintenance services so aircraft spend more time flying than on repair

Realizing the value of collaboration and data today

Cut fuel costs and carbon emissions



5%

saving

*For a 20 aircraft mixed jet fleet per year

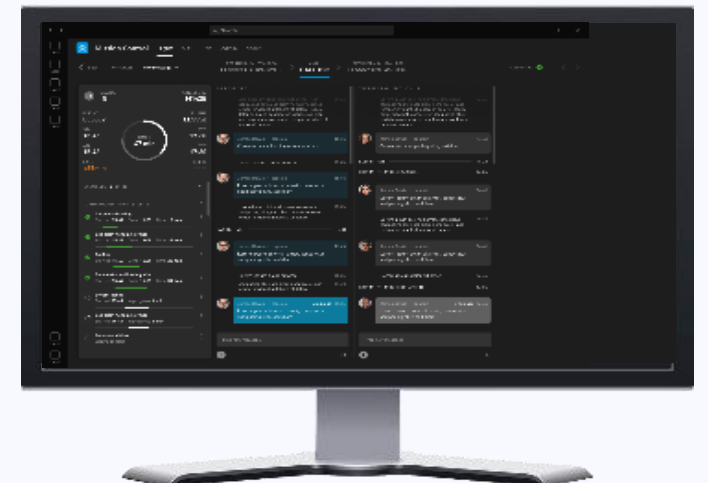
Avoid severe weather events



60%

reduction in Aircraft
on Ground (AOG) time

Save time with smart connections



81%

of teams rate collaboration
apps highly*

*<https://teamstage.io/teamwork-statistics>

SITA FOR AIRCRAFT

Making **flight operations**, **air traffic management** and **aircraft maintenance** more sustainable and efficient



COMMUNICATIONS

Connecting aircraft and people around the world



DATA & PLATFORMS

Turning aircraft data into valuable insights for the entire industry



APPLICATIONS

Empowering people with user-friendly tools



Optimizing your flight operations, from take off to landing and beyond

SAVE FUEL

With **tactical in-flight** recommendations that help pilots to save fuel during each flight.

IMPROVE ON TIME PERFORMANCE

With **data-driven recommendations** that help your team anticipate disruptions and improve your flight plans.

AGILE COLLABORATION

Bringing pilots and ground teams together with **solutions that easily integrate with their regular tools** for exchange of up-to-the-minute updates.



SITA OptiFlight®



SITA eWAS



SITA Flight Folder



SITA Mission Watch



SITA Mission Control





DEMO

— An efficient and sustainable flight

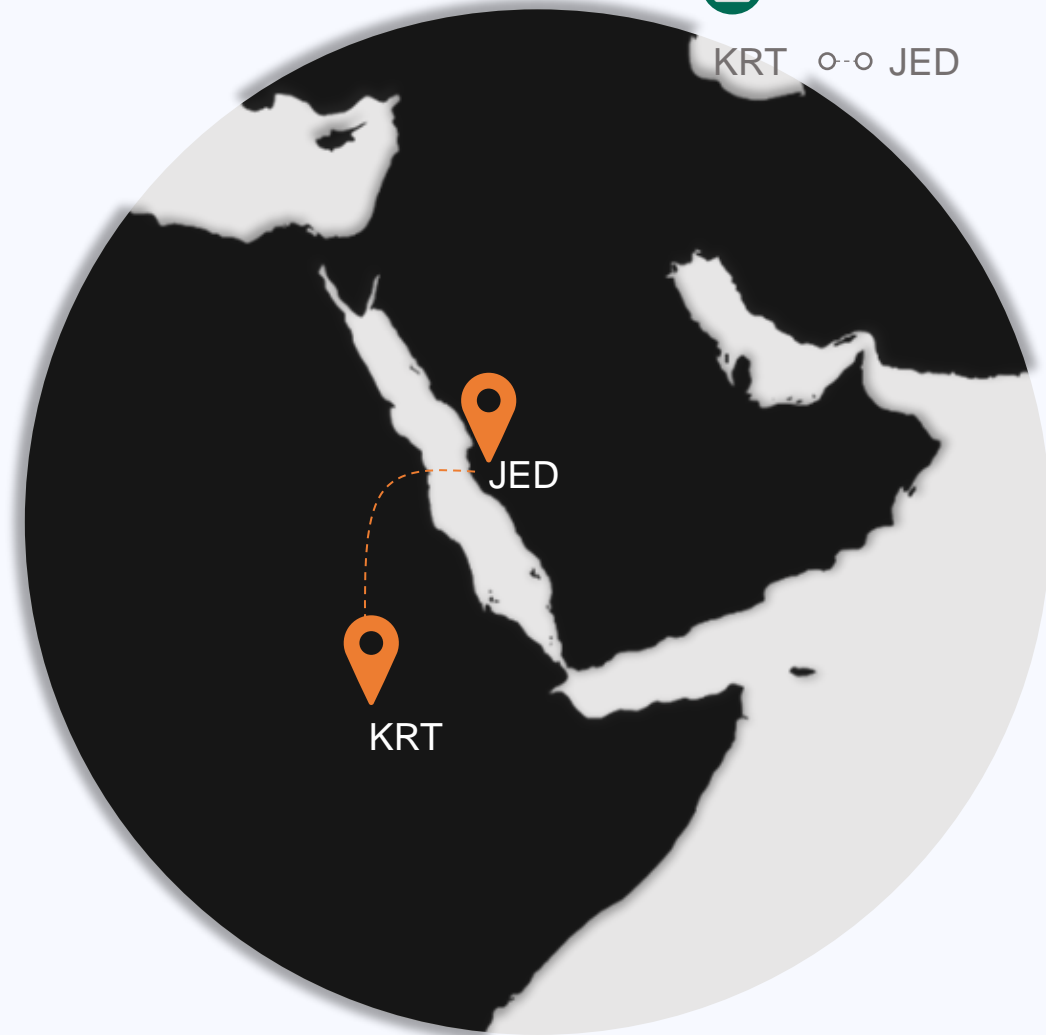
SITA
FOR AIRCRAFT

a flight from Khartoum to Jeddah

Flight m

24.11.22

KRT o-o JED



a flight from Khartoum to Jeddah



45 min worth of
additional **fuel burn**



\$\$\$ worth of unexpected
aircraft damage



Revenue loss due to
aircraft on the ground

Flight AM 135

 24.11.22

KRT ○-○ JED





Oliver - Pilot

GOAL: fly the optimal route

CHALLENGE: save fuel and avoid bad weather



Adam - Dispatcher

GOAL: support the flight

CHALLENGE: make timely and effective decisions



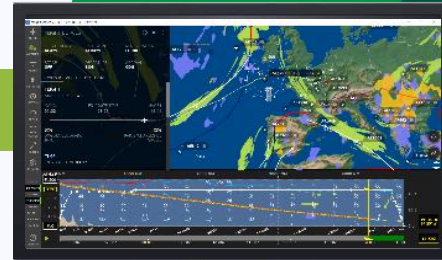
Salem – Ramp Supervisor

GOAL: coordinate ramp activities

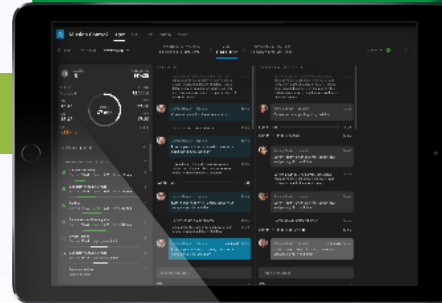
CHALLENGE: adapt to unexpected events



SITA Flight Folder
SITA eWAS
SITA OptiFlight



SITA Mission Watch
SITA Mission Control

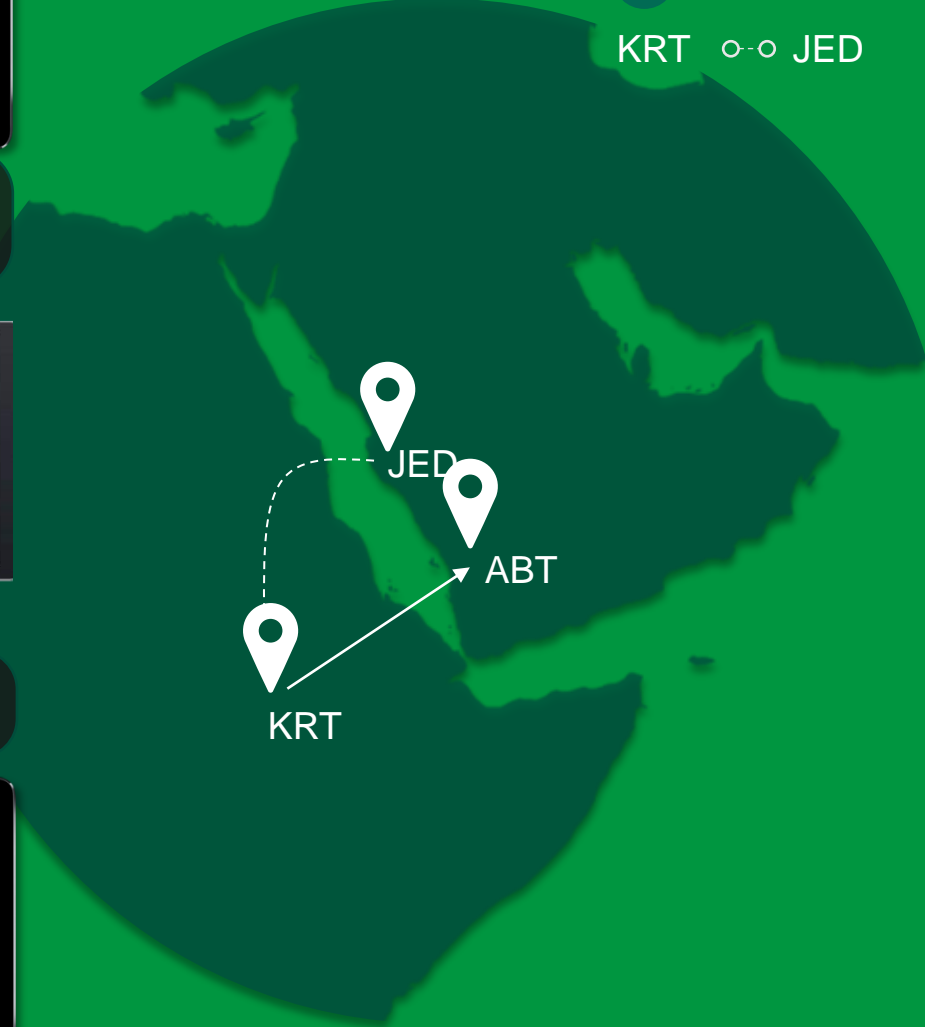


SITA Mission Control

Flight AM 135

24.11.22

KRT o-o JED

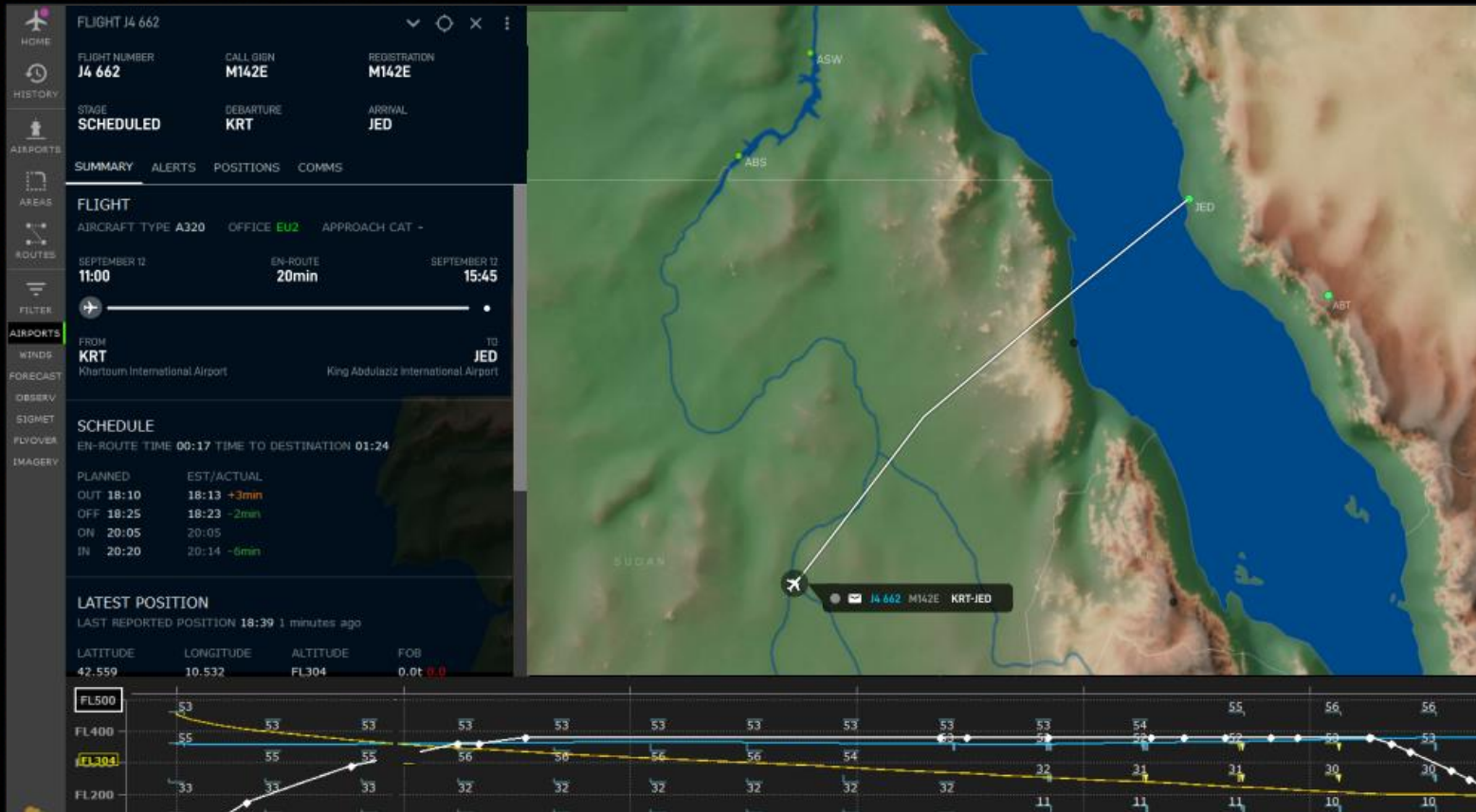


TIME
10:00
NOVEMBER 24

LOCATION
Mission control room at KRT



STAGE	AIRCRAFT AIRBUS A320	REGISTRATION M142E	PAX IN TRANSIT 8	FOB KG 4512		
GATE A32 NOVEMBER 24	FROM HSSK / KRT Khartoum Int'l	FLIGHT J4 662	TO OEJN / JED King Abdulaziz Int'l	GATE --:-- NOVEMBER 24		
STD 11:00	ATD --:--	FLIGHT DURATION 1h 30min	EN-ROUTE 1h 15min	LANDING IN n/a	ATA --:--	STA 15:45



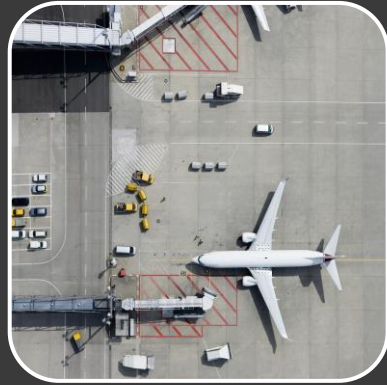
Adam - Dispatcher

Flight preparation:

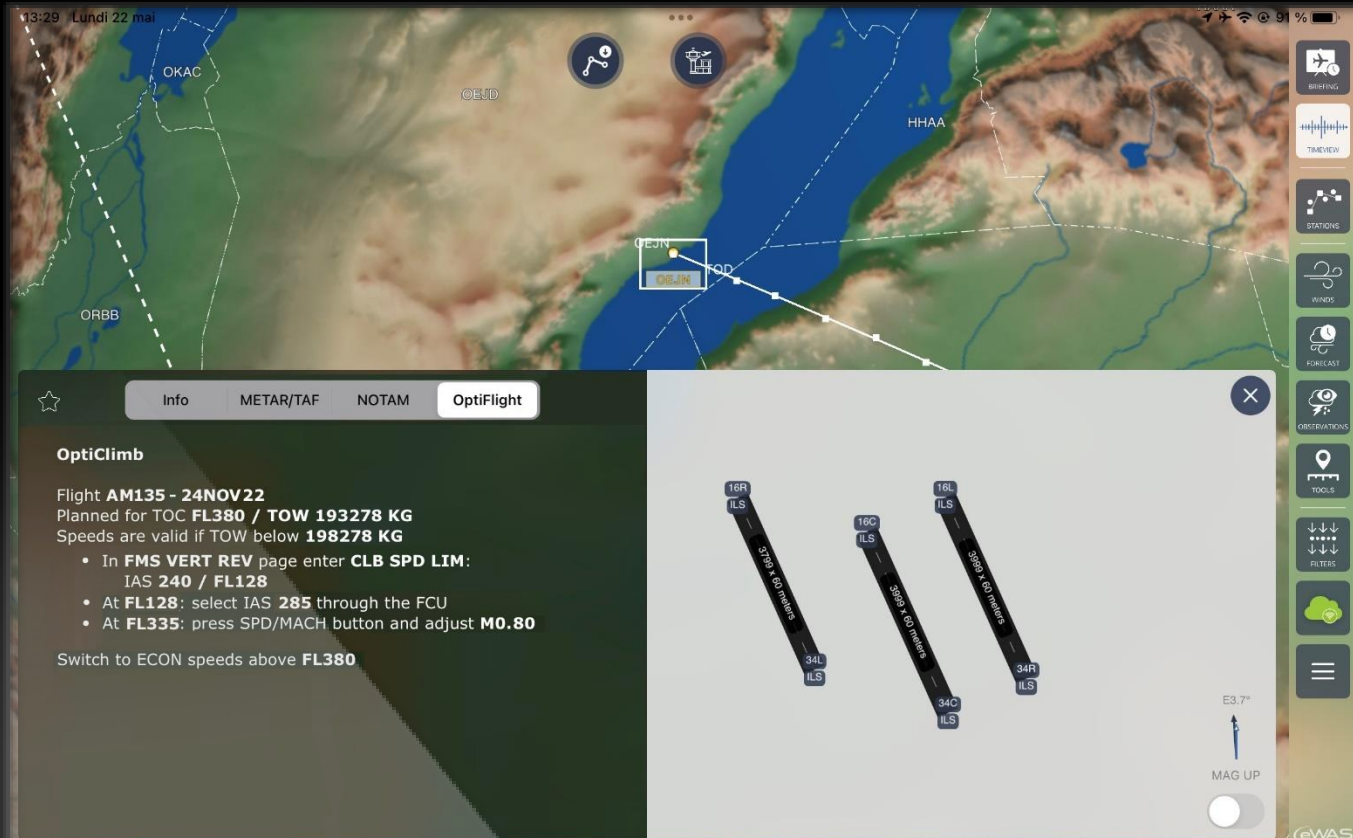
- Finalize flight package
- Review weather and alerts
- All clear, good to fly

TIME
10:15
NOVEMBER 24

LOCATION
**Flight briefing
at KRT**



STAGE	AIRCRAFT AIRBUS A320	REGISTRATION M142E	PAX IN TRANSIT 8	FOB KG 4512		
GATE A32 NOVEMBER 24	FROM HSSK / KRT Khartoum Int'l	FLIGHT J4 662	TO OEJN / JED King Abdulaziz Int'l	GATE --:-- NOVEMBER 24		
STD 11:00	ATD --:--	FLIGHT DURATION 1h 30min	EN-ROUTE 1h 15min	LANDING IN n/a	ATA --:--	STA 15:45



Oliver - Pilot

Flight briefing:

- Review flight
- Check weather
- Confirm OptiFlight recommendations

TIME
11:20
NOVEMBER 24

LOCATION
Mission control room at KRT



STAGE	AIRCRAFT AIRBUS A320	REGISTRATION M142E	PAX IN TRANSIT 8	FOB KG 4512		
GATE A32 NOVEMBER 24	FROM HSSK / KRT Khartoum Int'l	FLIGHT J4 662	TO OEJN / JED King Abdulaziz Int'l	GATE --:-- NOVEMBER 24		
STD 11:00	ATD 11:05	FLIGHT DURATION 1h 30min	EN-ROUTE 1h 15min	LANDING IN n/a	ATA --:--	STA 15:45

FLIGHT J4 662

HOME HISTORY AIRPORTS AREAS ROUTES FILTER AIRPORTS WINDS FORECAST OBSERV SIGMET FLYOVER IMAGERY

FLIGHT NUMBER **J4 662** CALL SIGN **M142E** REGISTRATION **M142E**

STAGE **OFF** DEPARTURE **KRT** ARRIVAL **JED**

SUMMARY ALERTS POSITIONS COMMS

FLIGHT
AIRCRAFT TYPE **A320** OFFICE **EU2** APPROACH CAT -

SEPTEMBER 12 **11:00** EN-ROUTE **20min** SEPTEMBER 12 **15:45**

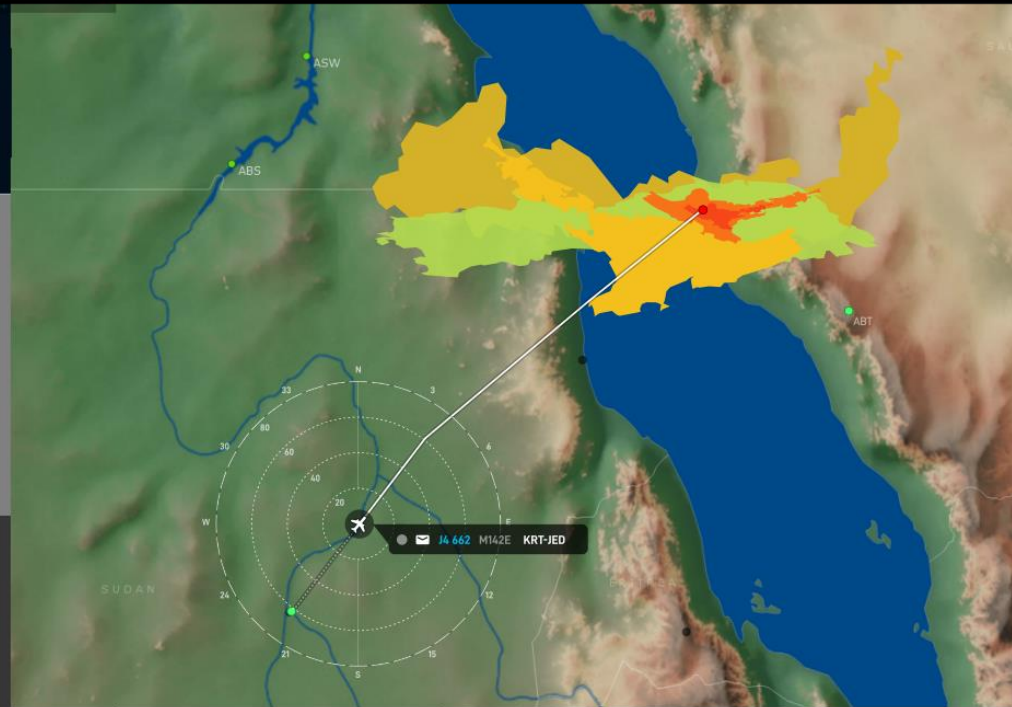
FROM **KRT** Khartoum International Airport TO **JED** King Abdulaziz International Airport

SCHEDULE
EN-ROUTE TIME **00:17** TIME TO DESTINATION **01:24**

PLANNED	EST/ACTUAL
OUT 18:10	18:13 +3min
OFF 18:25	18:23 -2min
ON 20:05	20:05
IN 20:20	20:14 -6min

LATEST POSITION
LAST REPORTED POSITION **18:39** 1 minutes ago

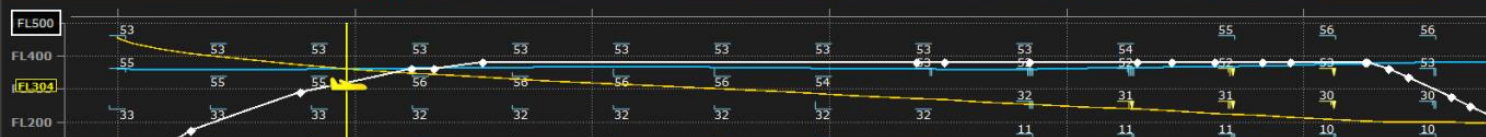
LATITUDE	LONGITUDE	ALTITUDE	FOB
42.559	10.532	FL304	0.0t 0.0



Adam - Dispatcher

Dealing with weather:

- Receives alerts
- Initiates diversion



TIME
11:20
NOVEMBER 24

LOCATION
In-flight



STAGE	AIRCRAFT AIRBUS A320	REGISTRATION M142E	PAX IN TRANSIT 8	FOB KG 4512
-------	--------------------------------	------------------------------	----------------------------	-----------------------

GATE A32 NOVEMBER 24	FROM HSSK / KRT Khartoum Int'l	FLIGHT J4 662	TO OEJN / JED King Abdulaziz Int'l	GATE --:-- NOVEMBER 24
-----------------------------------	---	-------------------------	---	------------------------------

STD 11:00	ATD 11:05	FLIGHT DURATION 1h 30min	EN-ROUTE 1h 15min	LANDING IN n/a	ATA --:--	STA 15:45
---------------------	---------------------	------------------------------------	-----------------------------	--------------------------	--------------	---------------------



Oliver - Pilot

Flight briefing:

Checks real-time weather

TIME
11:25
NOVEMBER 24

LOCATION
Mission control room at KRT



STAGE	AIRCRAFT AIRBUS A320	REGISTRATION M142E	PAX IN TRANSIT 8	FOB KG 4512		
GATE A32 NOVEMBER 24	FROM HSSK / KRT Khartoum Int'l	FLIGHT J4 662	TO OEJN / JED King Abdulaziz Int'l	GATE --:-- NOVEMBER 24		
STD 11:00	ATD 11:05	FLIGHT DURATION 1h 30min	EN-ROUTE 1h 15min	LANDING IN n/a	ATA --:--	STA 15:45

Search

Mission Control Home SOP Help Feedback About

WATCHLIST Connected Unread messages 0

STATUS DIVERTED B737-700 M142E

2022 SEP 12 FLIGHT J4 662 2022 SEP 12

FROM KRT Khartoum International Airport TO ABT Al-Baha Domestic Airport

STD 11:00 FLIGHT DURATION 1h 45min STA 15:45

ETD 11:01 EN-ROUTE 0h 51min ETA 15:45

ATD 11:01 ARRIVING IN 3h 54min +1min ATA --:--

FILES 1

Passenger manifest.pdf Attached Sep 12, 2022 at 10:45

B737-700 M142E AT 16:20

AIRCRAFT GENERAL PAX REPS

J4 662 OUT 10:55

J4 662 OFF 11:01

Frank Lee - Dispatch @KRT 11:52
Be advised severe thunderstorm at JED. Recommend to divert to ABT.

J4 662 15:50
Roger. Waiting for new FP to ABT

Frank Lee - Dispatch @SIN 15:50
Acknowledged

J4 662 DIVERTED 16:25

Frank Lee - Dispatch @KRT 15:50
New FP sent

Type new message



Adam - Dispatcher

Dealing with weather:

Confirms with Pilot via MCDU



TIME
04:32
NOVEMBER 24

LOCATION
Mission control room at KRT



STAGE	AIRCRAFT AIRBUS A320	REGISTRATION M142E	PAX IN TRANSIT 8	FOB KG 4512		
GATE A32 NOVEMBER 24	FROM HSSK / KRT Khartoum Int'l	FLIGHT J4 662	TO OEJN / JED King Abdulaziz Int'l	GATE --:-- NOVEMBER 24		
STD 11:00	ATD 11:05	FLIGHT DURATION 1h 30min	EN-ROUTE 1h 15min	LANDING IN n/a	ATA --:--	STA 15:45

Mission Control Home SOP Help Feedback About

WATCHLIST 4 Unread messages: 0

STATUS DIVERTED B737-700 M142E

2022 SEP 12 FLIGHT J4 662 2022 SEP 12

FROM KRT Khartoum International Airport TO ABT Al-Baha Domestic Airport

STD 11:00 FLIGHT DURATION 1h 45min STA 15:45

ETD 11:01 EN-ROUTE 0h 51min ETA 15:45

ATD 11:01 +1min ARRIVING IN 3h 54min ATA --:--

FILES 1

Passenger manifest.pdf Attached Sep 12, 2022 at 10:45

B737-700 M142E AT 16:20

GENERAL

J4 662 OUT 10:55

J4 662 OFF 11:01

Frank Lee - Dispatch@KRT 11:52

Be advised severe thunderstorm at JED. Recommend to divert to ABT.

J4 662 15:50

Roger. Waiting for new FP to ABT

Frank Lee - Dispatch@SIN 15:50

Acknowledged

J4 662 DIVERTED 16:25

Frank Lee - Dispatch@KRT 15:50

New FP sent

Frank Lee - Dispatch@KRT 11:53

RAMP_crew To ramp crew at ABT airport: be advised flight J4 662 is diverted to ABT



Adam - Dispatcher

Dealing with weather:

Contacts ABT

TIME
11:30
NOVEMBER 24

LOCATION
**Ramp at
ABT**



STAGE	AIRCRAFT AIRBUS A320	REGISTRATION M142E	PAX IN TRANSIT 8	FOB KG 4512		
GATE A32 NOVEMBER 24	FROM HSSK / KRT Khartoum Int'l	FLIGHT J4 662	TO OEJN / JED King Abdulaziz Int'l	GATE --:-- NOVEMBER 24		
STD 11:00	ATD 11:05	FLIGHT DURATION 1h 30min	EN-ROUTE 1h 15min	LANDING IN n/a	ATA --:--	STA 15:45

Mission Control interface showing flight status and communication logs.

STATUS DIVERTED B737-700 M142E

2022 SEP 12 FLIGHT J4 662 2022 SEP 12

FROM KRT Khartoum International Airport TO ABT Al-Baha Domestic Airport

STD 11:00 FLIGHT DURATION 1h 45min STA 15:45

ETD 11:01 EN-ROUTE 0h 51min ETA 15:45

ATD 11:01 ARRIVING IN 3h 54min ATA --:--

+1min

FILES 1
Passenger manifest.pdf
Attached Sep 12, 2022 at 10:45

B737-700 M142E AT 16:20

GENERAL

J4 662 OUT 10:55

J4 662 OFF 11:01

Frank Lee - Dispatch @KRT 11:52
Be advised severe thunderstorm at JED. Recommend to divert to ABT.

J4 662 15:50
Roger. Waiting for new FP to ABT

Frank Lee - Dispatch @SIN 15:50
Acknowledged

J4 662 DIVERTED 16:25

Frank Lee - Dispatch @KRT 15:50
New FP sent

PAX REPS

Frank Lee - Dispatch @KRT 11:53
RAMP_crew To ramp crew at ABT airport: be advised flight J4 662 is diverted to ABT

José Nuñez - Ramp crew @ABT 11:54
Roger

José Nuñez - Ramp crew @ABT 11:54
We are all set and ready



**Salem – Ramp
Supervisor**

Dealing with diversion:

- Receives message from Dispatcher
- Ready to take AM 135

TIME
11:32
NOVEMBER 24

LOCATION
Mission control room at KRT



STAGE	AIRCRAFT AIRBUS A320	REGISTRATION M142E	PAX IN TRANSIT 8	FOB KG 4512		
GATE A32 NOVEMBER 24	FROM HSSK / KRT Khartoum Int'l	FLIGHT J4 662	TO OEJN / JED King Abdulaziz Int'l	GATE --:-- NOVEMBER 24		
STD 11:00	ATD 11:05	FLIGHT DURATION 1h 30min	EN-ROUTE 1h 15min	LANDING IN n/a	ATA --:--	STA 15:45

The screenshot shows a 'Mission Control' application window. The top navigation bar includes 'Home', 'SOP', 'Help', 'Feedback', and 'About'. A search bar is present. The main content area is divided into several sections:

- STATUS:** A red warning icon indicates the flight is 'DIVERTED'. The aircraft is identified as B737-700 M142E.
- FLIGHT INFO:** Shows the flight is on SEP 12, 2022, with flight number J4 662. It is currently diverted from KRT (Khartoum International Airport) to ABT (Al-Baha Domestic Airport).
- Timeline:** A horizontal timeline shows the flight path from KRT to ABT, with a red arrow indicating the diversion point.
- Key Times:** STD 11:00, ETD 11:01, ATD 11:01 (+1min), EN-ROUTE 0h 51min, ARRIVING IN 3h 54min, and STA 15:45.
- Files:** A 'Passenger manifest.pdf' is attached, dated Sep 12, 2022 at 10:45.
- Chat Log:** A central chat window shows messages from 'Frank Lee - Dispatch @KRT' and 'Roger' regarding the diversion. The latest message states: 'RAMP_crew To ram crew at ABT airport: be advised flight J4 662 is diverted to ABT'. Below the chat is a text input field and a 'Send new details to pilot' checkbox.
- GENERAL and PAX REPS:** Additional chat windows for general communication and passenger representatives are visible at the bottom.



Adam - Dispatcher

Send diversion message:

Send new details to pilot

TIME
11:35
NOVEMBER 24

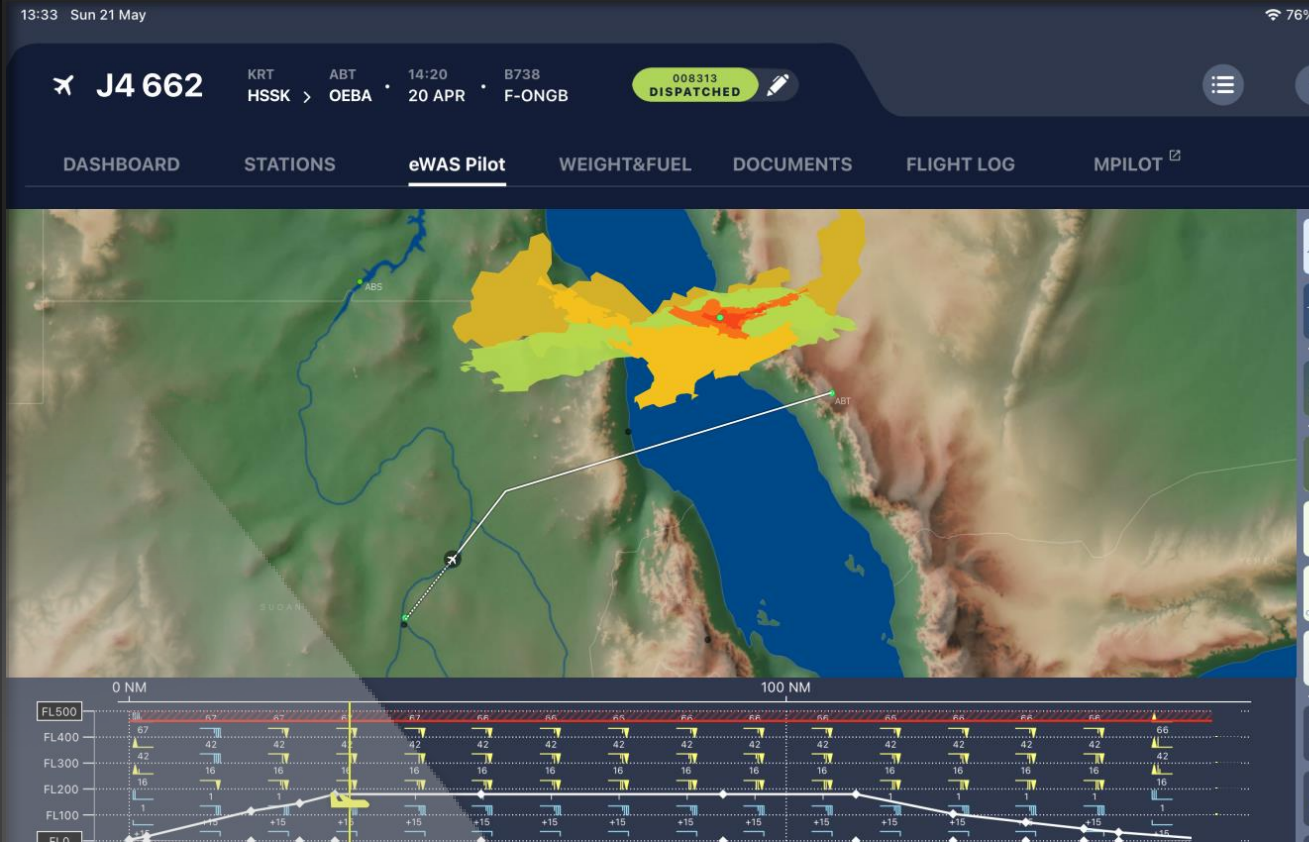
LOCATION
In-flight



STAGE AIRCRAFT REGISTRATION PAX IN TRANSIT FOB KG
A32 **AIRBUS A320** **M142E** **8** **4512**

GATE FROM FLIGHT TO GATE
A32 **HSSK / KRT** **J4 662** **OEBA / ABT** **--:--**
NOVEMBER 24 Khartoum Int'l King Saud Bin Abdulaziz NOVEMBER 24

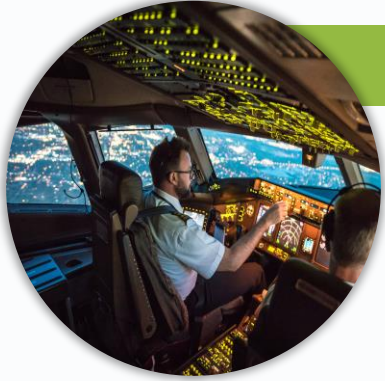
STD ATD FLIGHT DURATION EN-ROUTE LANDING IN ATA STA
11:00 **11:05** **1h 30min** **1h 15min** **n/a** **--:--** **16:00**



Oliver - Pilot

Diversion instructions:

Confirms new destination



Oliver - Pilot

GOAL: fly the optimal route

✔ **SAVED** fuel
AVOIDED bad weather



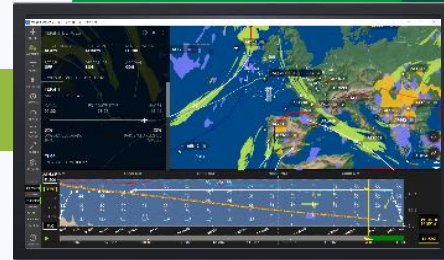
SITA Flight Folder
SITA eWAS
SITA OptiFlight



Adam - Dispatcher

GOAL: support the flight

✔ **MADE** timely and effective decisions



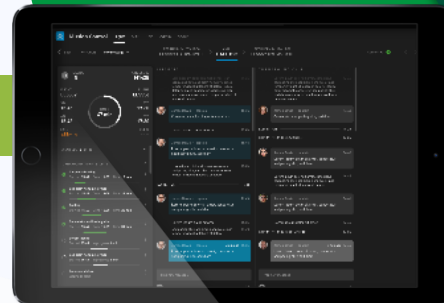
SITA Mission Watch
SITA Mission Control



Salem – Ramp Supervisor

GOAL: coordinate ramp activities

✔ **ADAPTED** to unexpected events

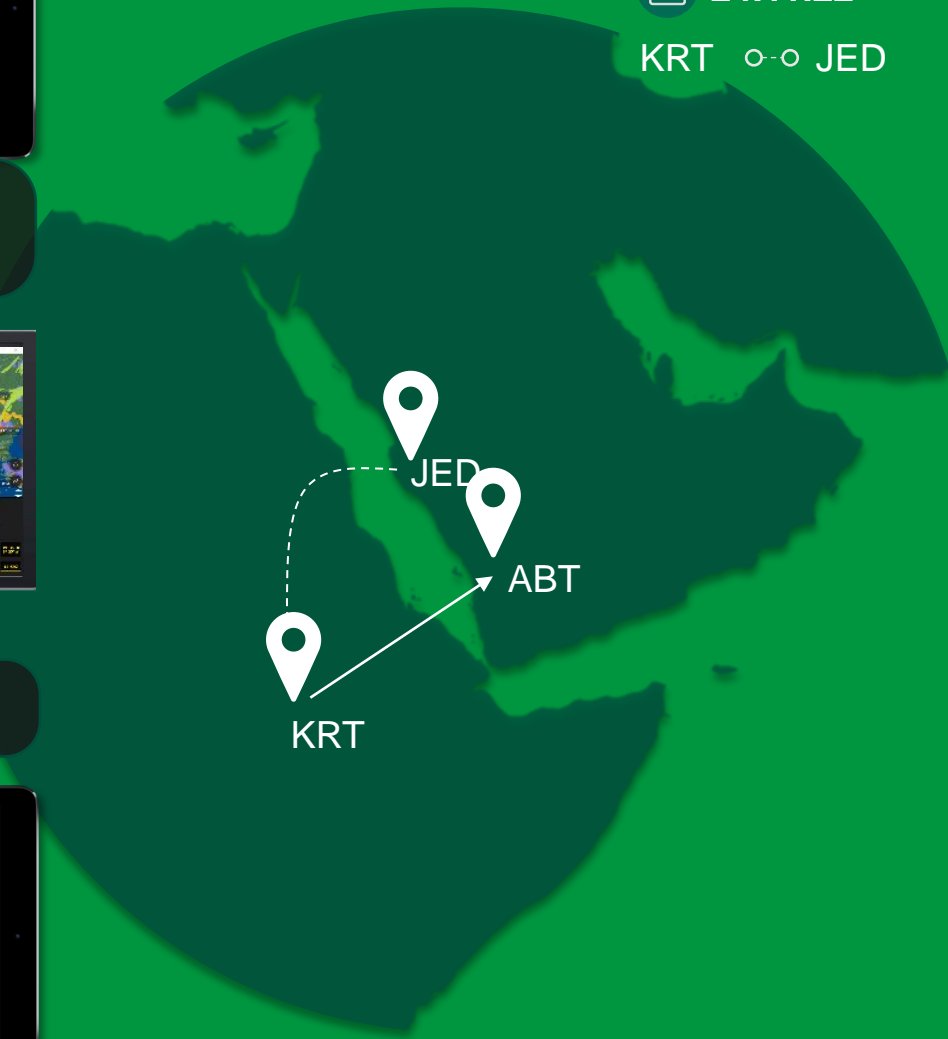


SITA Mission Control

Flight J4 662

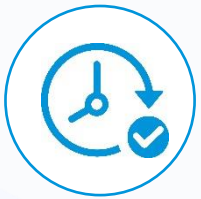
📅 24.11.22

KRT ↔ JED



This is not just another flight...

It's a successful mission leveraging data, technology and teamwork to achieve the **most efficient and sustainable flight.**



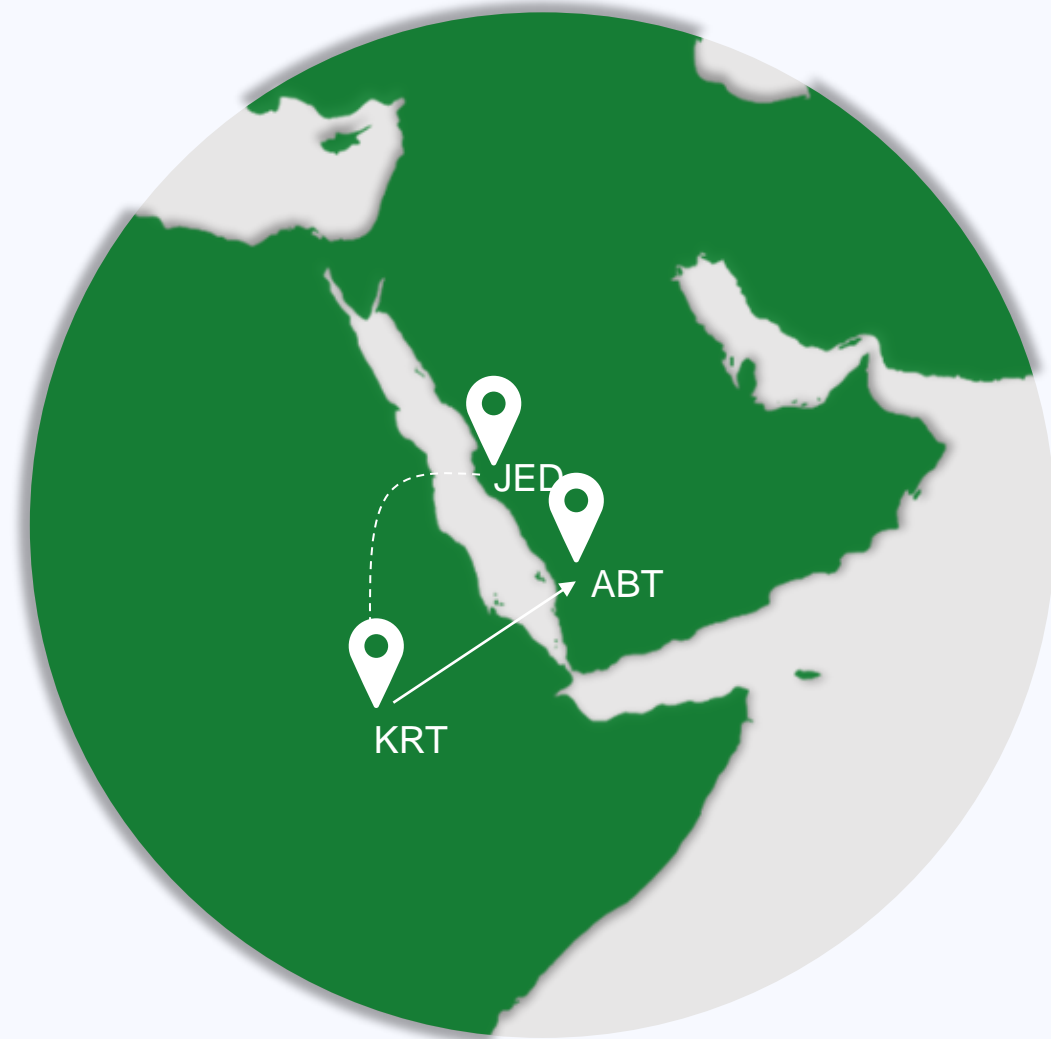
Anticipate



Adapt



Measure



SITA FOR AIRCRAFT

Thank you!

SITA
FOR AIRCRAFT