



Border Force National Safeguarding & Modern Slavery



Vulnerable people at international borders:

The United Kingdom model

Simon Rose



Borders Summit
Cape Town

 modern slavery & exploitation helpline
08000 121 700



CrimeStoppers.
0800 555 111
100% anonymous. Always.

20 May 2024



Border Force

National Safeguarding & Modern Slavery



- Who we are.
- What we do.
- How digital technologies support us.

*Protecting the vulnerable by safeguarding those at risk.
Preventing exploitation by stopping those who harm.*



[Video: 1m 15s]



We are Border Force



Border Force is a law enforcement command within the Home Office (UK Interior Ministry).

We:

- Secure the border.
 - Facilitate trade.
 - **Protect the vulnerable.**

Safeguarding



Safeguarding at the border is **identifying vulnerable people** who may be at risk of harm through:

- Modern slavery and human trafficking.
- Child sexual abuse & exploitation.
- Harmful Practices.
- Other vulnerability.

And **putting measures in place to protect** them.

Safeguarding



Safeguarding at the border is **identifying vulnerable people** who may be at risk of harm through:

- Modern slavery and human trafficking.
- Child sexual abuse & exploitation.
- Harmful Practices.
- Other vulnerability.

And **putting measures in place to protect** them.

Protecting the vulnerable: *by safeguarding those at risk*

Preventing exploitation: *by stopping those who harm*



Our *safeguarding* reach

Onshore

- 140+ ports UK-wide.
- General aviation & maritime patrols.

Offshore

- UK & international waters.
- In harbour.

In-country

- Inland Command (postal hubs).
- Intelligence.

International

- Juxtaposed controls (Europe).
- Home Office International.

Safeguarding Teams



- Oversee Border Force's *duty to protect* victims; *duty to prevent* the furtherance of crime; and *duty to mitigate* the corporate risk from both.
- Engage UK-wide in all 5 Border Force Regions and at UK controls in Belgium, France & the Netherlands.
- Specialise and consolidate as subject matter experts.
- Guide and advise frontline colleagues, and take on more complex cases.
- Collaborate with law enforcement, Local Authorities and other organisations.
- Create, run and support awareness-raising initiatives in-Region.
- Provide data quality assurance and oversee the quality of case reporting.


designated FIRST RESPONDERS

 UK Visas & Immigration

 Border Force

 Gangmasters &
Labour Abuse Authority

 Immigration Enforcement


Home Office

 NSPCC



 Barnardo's



MEDAILLE TRUST
REFUGE AND FREEDOM FROM MODERN SLAVERY



 **NCA**
National Crime Agency

 **NPCC**
National Police Chiefs' Council

Local
Government


 **unseen**



SINGLE COMPETENT AUTHORITY



 **Bawso**

 **KALAYAAN**
Justice for migrant domestic workers





Border Force

National Safeguarding & Modern Slavery



Safeguarding: *examples*

 modern slavery &
exploitation helpline
08000 121 700

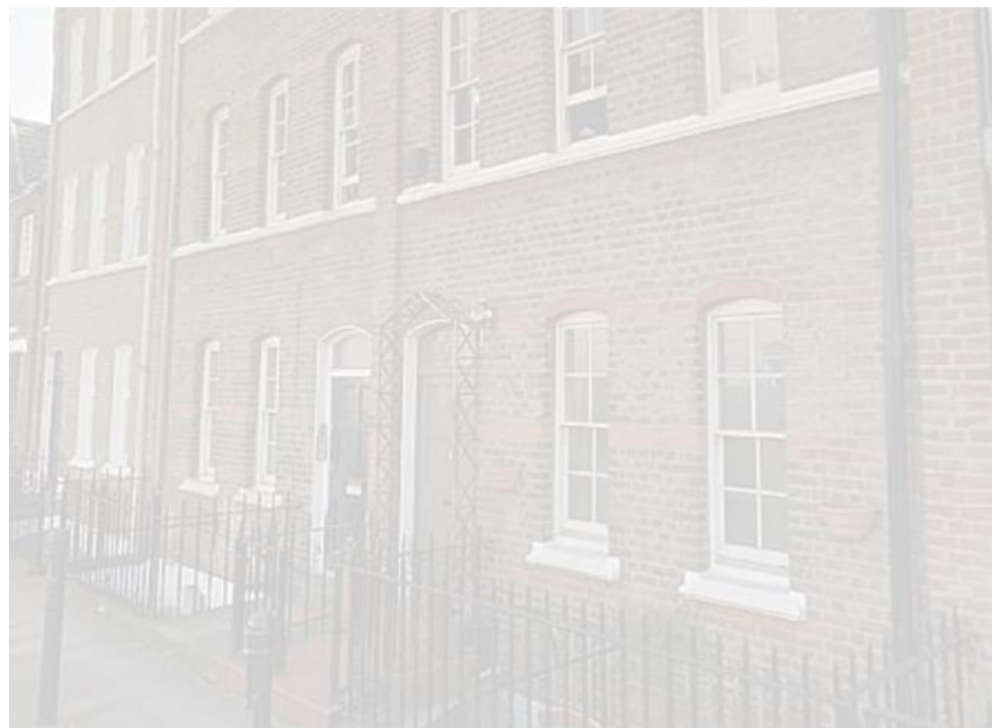


CrimeStoppers.
0800 555 111
100% anonymous. Always.

Sex trafficking victim given entry to the UK ...



- An 18-year old, Romanian female was identified as vulnerable to sexual exploitation by a male accompanying her.
- She declined help and Border Force had to admit her to the UK



Sex trafficking victim given entry to the UK ...



... but referred to police

- Border Force referred concerns to the NCA and police.
- Police visited her given address the same day.
- She had already been placed in a brothel and now accepted rescue.
- She described having been exploited since the age of 14.
- The male trafficker was convicted and gaoled for 10 years.
- Three brothel owners were convicted of modern slavery offences and jailed for 21 months (1) and 18 months (2) respectively.

BMW: Be My Wages!



- A BMW was stopped before a Channel Tunnel departure to France.
- The British driver of Iraqi origin owned a car wash in the UK.
- 8 Romanian identity cards with him included 1 for a 15 year old boy.
- Border Force took intelligence action with police, made an NRM referral and engaged Social Services.
- Social Services tried unsuccessfully to safeguard the child.
- A 999 call prompted combined action by the Gangmasters & Labour Abuse Authority, Police and Social Services.
- All 8 Romanians were found in a locked room.
- All 8 entered the NRM system, with the child safe in care.
- Border Force action provided vital evidence against a prime suspect

Transnational Child Sex Offenders



What you see ...

What this child sees ...



What we **STOP!**



Border Force

National Safeguarding & Modern Slavery



Safeguarding: *new technologies*

 modern slavery &
exploitation helpline
08000 121 700



CrimeStoppers.
0800 555 111
100% anonymous. Always.



New technology supporting *vulnerability at the border*

Reliable information

For more secure borders.
A clear national picture on safeguarding at the border.

Faster analytics

For quicker crime prevention and victim protection.
Commercial partnerships which embrace AI-driven scientific expertise.

Digital customs capability

For detecting digital customs offences.
Commercial partnerships which harness contraband filter technology.

Reliable information for more secure borders



Information

Better INFORMATION:

to increase victim-related

understanding and awareness at the frontline

More DATA:

to enrich **operational**
and
strategic

knowledge
and inform

policy
development

Data

Intelligence

Improved INTELLIGENCE:

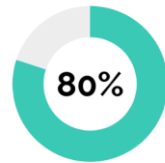
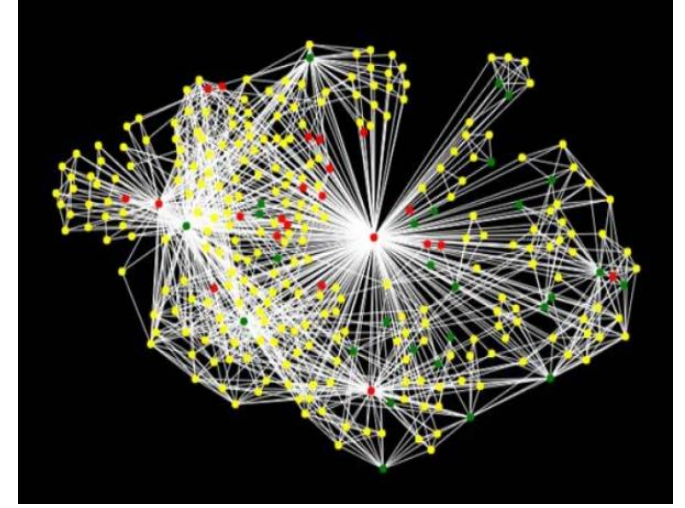
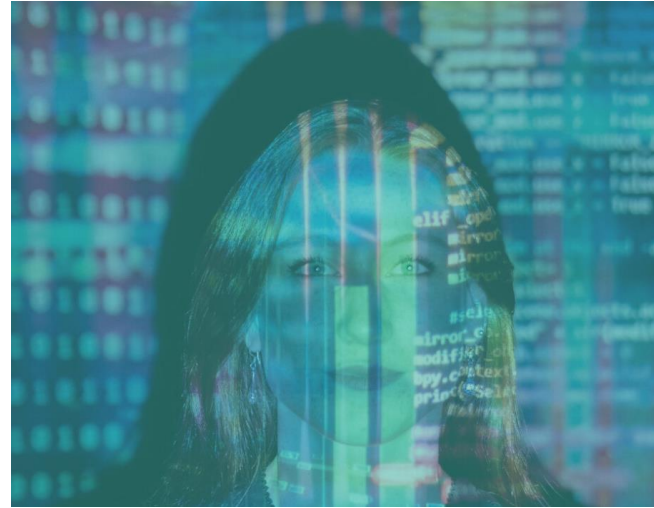
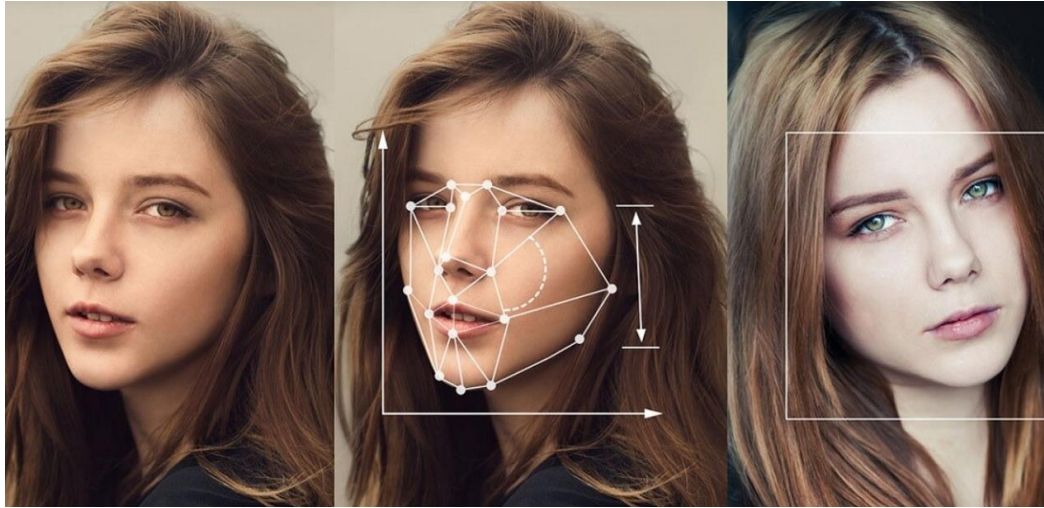
to direct more and better activity

against *perpetrators at the frontline*

Faster analytics

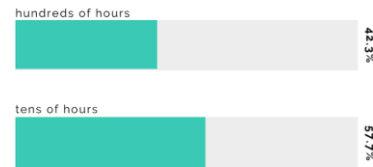


Border Force



of survey respondents said Traffic Jam had created new leads in investigations, and in some cases, over a hundred new leads.

TIME SAVED USING TRAFFIC JAM



Digitalising customs examinations



cyacomb.com

“ UK Law Enforcement Officers scanned a 256Gb Drive with Cyacomb Examiner. In less than **5 SECONDS** they had identified chargeable material and the whole drive was fully scanned in **3 MINUTES** and **22 SECONDS** ”

The screenshot shows the Cyacomb Examiner software interface. At the top, there's a file path: D:\Evaluation Kit\Contraband Filter\SpaceTra. Below it, there are buttons for 'Load Contraband Filter', 'Edit...', and 'New...'. The main area shows a list of drives: '374', 'NVMe...', 'Lazer Blade US...', and 'S SCSI Disk Devi...'. On the right, there's a dropdown menu for 'Polit Triage <User>' with 'Edit...' and 'New...' buttons. In the center, there are four buttons: 'Pause Scan', 'Abort', 'View Results', and 'Create Report'. On the right side, there's a circular progress indicator labeled 'SCANNING' with '1 Block Found' and '1m 6s elapsed'. At the bottom, there are three columns: 'Analyst S. Holmes', 'Suspect Bill Door', and 'Device Personal Laptop'.



Border Force

Safeguarding and Modern Slavery: Protecting the vulnerable and preventing exploitation



See something; say something

BorderForceNationalSafeguardingandModernSlavery@homeoffice.gov.uk

*A life we safeguard
is a life you set free*



CrimeStoppers.

0800 555 111

100% anonymous. Always.